



...connecting to the aftermarket

CTS-UNI-NISSAN

Nissan Universal Steering Wheel Control Interface



INSTRUCTION MANUAL

www.connects2.com

Designed and
Engineered
in the UK. 

CTS-UNI-NISSAN

Nissan universal steering wheel control interface for analogue vehicles.

Product Contents

Interface, 3 x Harness, Instruction

Application

Harness A

Qashqai 2007-2013
X-Trail 2009-2014
Micra 2007-2010
Rogue 2007-2013
Juke 2010>
Micra 2010>
Sunny 2012>
March 2010>
Pulse 2011>
Evolta 2013>
Versa 2008>
Note 2012>

Frontier 2009>
Pathfinder 2013>
Versa Note 2013>
NV200 2013>
Quest 2010>
Cube 2009>
Xterra 2009-2016
Titan 2009>
Navara 2009>
Sentra 2013>
Note 2009-2012
Cabstar 2014>

Harness B

Navara 2006>
350Z 2003>
X-Trail 2001>

For vehicles with 6 &
10 Way connector

Harness C

X-Trail 2001 - 2008
Almera 2000 - 2006
Primera 2001 - 2007
Terrano 2001 - 2006

For vehicles with 8/16
way connector

Prior to installation

Read the manual prior to installation. Technical knowledge is necessary for installation. The place of installation must be free of moisture and away from heat sources. Please ensure you use the correct tools to avoid damage to the vehicle or product.

Connects2 can not be held responsible for the installation of this product.

Technical Support

Connects2 want to provide a fast and suitable resolution should you encounter any technical issues. With this in mind, when contacting Connects2, try to provide as much information as possible. This will speed up the process and help us to help you.

Please use our dedicated online technical support centre: support.connects2.com

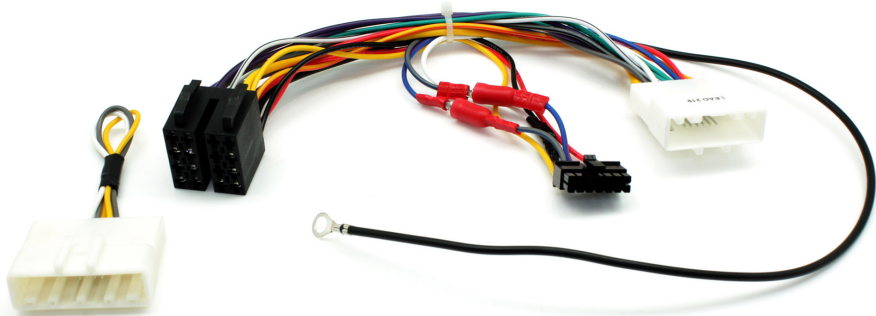


Subscribe to our YouTube Channel for installation guides and tips... www.youtube.com/connects2

DIP SWITCH SETTINGS

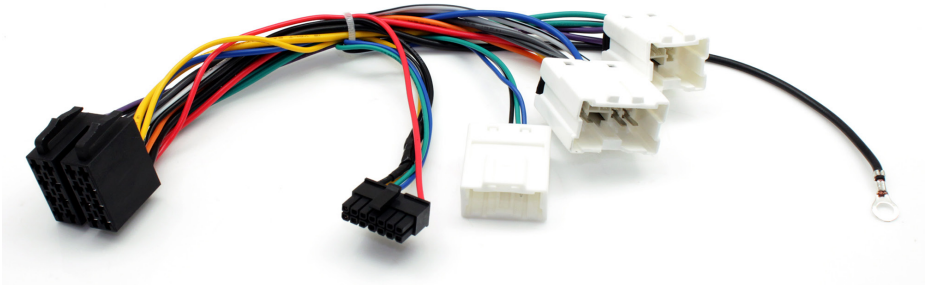
Make	Model	Year From	Year To	Harness	Connector	Phone Button Support	CAN/Analogue	Dipswitch Setting							
								1	2	3	4	5	6	7	
Nissan	350Z	2003		Harness A		X	Analogue	ON	ON	ON	-	ON	ON	-	
	Almera	2000	2006			X	Analogue	ON	ON	ON	-	ON	ON	-	
	Cube	2009				√	Analogue	ON	-	ON	ON	-	-	ON	
	Evia	2013				√	Analogue	ON	-	ON	ON	-	-	ON	
	Frontier	2009				√	Analogue	ON	-	ON	ON	-	-	ON	
	Juke	2010				√	Analogue	ON	-	ON	ON	-	-	ON	
	March	2010				√	Analogue	ON	-	ON	ON	-	-	ON	
	Micra	2007	2010			√	Analogue	-	-	-	ON	-	-	ON	
	Micra	2010				√	Analogue	ON	-	ON	ON	-	-	ON	
	Navara	2010				√	Analogue	-	-	-	ON	-	-	ON	
	Navara	2009				√	Analogue	ON	-	ON	ON	-	-	ON	
	Navara	2006				√	X	Analogue	ON	ON	ON	-	ON	ON	
	Note	2012				√	√	Analogue	ON	-	ON	ON	-	-	ON
	Note	2009	2012			√	√	Analogue	ON	ON	ON	ON	-	-	ON
	NV200	2013				√	√	Analogue	ON	-	ON	ON	-	-	ON
	Pathfinder	2013				√	√	Analogue	ON	-	ON	ON	-	-	ON
	Primera	2001	2007				X	Analogue	ON	ON	ON	-	ON	ON	
	Pulse	2011				√	√	Analogue	ON	-	ON	ON	-	-	ON
	Qashqai	2007	2013			√	√	Analogue	-	-	-	ON	-	-	ON
	Quest	2010				√	√	Analogue	ON	-	ON	ON	-	-	ON
	Sentra	2013				√	√	Analogue	ON	-	ON	ON	-	-	ON
	Sunny	2012				√	√	Analogue	ON	-	ON	ON	-	-	ON
	Terrano	2001	2006				X	Analogue	ON	ON	ON	-	ON	ON	
	Tida	2007	2014			√	√	Analogue	ON	ON	ON	ON	-	-	ON
	Titan	2009				√	√	Analogue	ON	-	ON	ON	-	-	ON
	Versa	2008				√	√	Analogue	ON	-	ON	ON	-	-	ON
	Xterra	2009				√	√	Analogue	ON	-	ON	ON	-	-	ON
	X-Trail	2009	2014			√	√	Analogue	-	-	-	ON	-	-	ON
	X-Trail	2013					X	Analogue	-	ON	ON	ON	-	-	ON
	X-Trail	2001					X	Analogue	ON	ON	ON	-	ON	ON	
	X-Trail	2001	2008				X	Analogue	ON	ON	ON	-	ON	ON	
	Navara	2006				Harness B	6 & 10 Way connector	√	Analogue	ON	ON	-	ON	-	-
350Z	2003			7 & 10 Way connector	√		Analogue	ON	ON	-	ON	-	-	ON	
X-Trail	2001			8 & 10 Way connector	√		Analogue	ON	ON	-	ON	-	-	ON	
X-Trail	2001	2008		Harness C	8/16 way connector	√	Analogue	-	-	ON	ON	-	-	ON	
Almera	2000	2008			8/16 way connector	√	Analogue	-	-	ON	ON	-	-	ON	
Primera	2001	2007			8/16 way connector	√	Analogue	-	-	ON	ON	-	-	ON	
Terrano	2001	2006			8/16 way connector	√	Analogue	-	-	ON	ON	-	-	ON	

HARNESSES

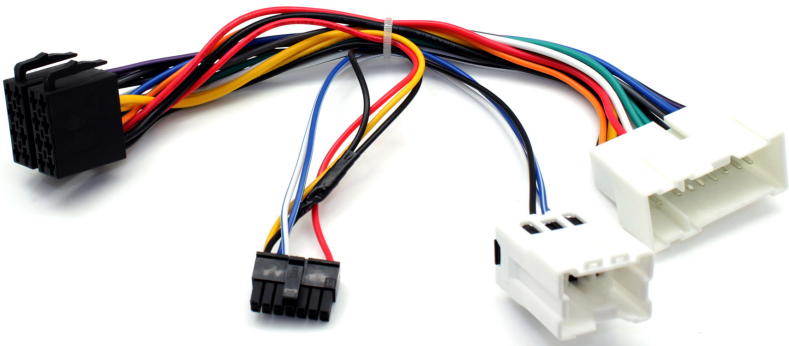


HARNESSES

HARNESSES



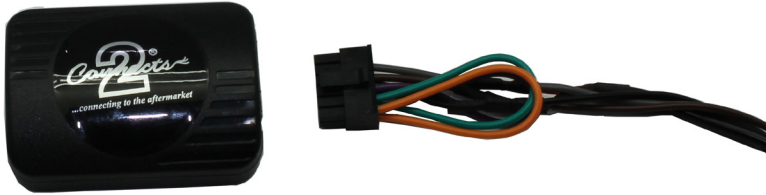
HARNESS B



HARNESS C

FITTING GUIDE

1. Remove and disconnect the original head unit.
2. Connect the 12 way molex connector of the head unit patch lead (supplied separately) to the interface.



3. Connect the opposite end of head unit patch lead to the head unit steering wheel control input on the back of the aftermarket head unit. This may be a 3.5mm jack plug or a wire input depending upon the head unit brand being fitted. Please see the head unit installation manual for further information on where to connect.

Important Note: This step must be completed before connecting power to the interface. Failure to do so may result in no steering wheel control function.

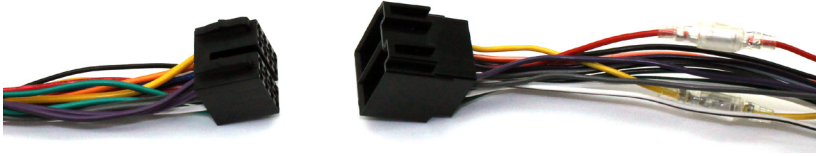


4. Connect the 14 way molex connector to the interface.



FITTING GUIDE

5. Connect the male power/speaker ISO harness to the female power/speaker ISO harness from the aftermarket head unit.



For aftermarket head units which do not have an ISO connector the interface uses the following wiring colours:

Wire Colour	Function
Yellow	Permanent 12V
Black	Ground
Red	12V Ignition
Orange	Illumination
Blue	Antenna Remote

Wire Colour	Function
Purple	Right Rear Speaker +
Purple/Black	Right Rear Speaker -
Green	Left Rear Speaker +
Green/Black	Left Rear Speaker -
Grey	Right Front Speaker +
Grey/Black	Right Front Speaker -
White	Left Front Speaker +
White/Black	Left Front Speaker -

6. Connect the female vehicle specific connector to the male vehicle connector. Test head unit for correct operation.

STEERING WHEEL CONTROL FUNCTIONS

